



# Monthly Bulletin

February 2015

The KnowFife Dataset email bulletin is a monthly update and roundup of information relating to the KnowFife Dataset. The KnowFife Dataset provides access to a broad range of social, economic and health and wellbeing indicators for partners and the public in Fife. <http://knowfife.fife.gov.uk>

## **\*\* KnowFife Dataset support and contact \*\***

From **1<sup>st</sup> April 2015** the current co-ordinator of the KnowFife Dataset (Chris) is leaving this role.

The KnowFife Dataset **will continue to update and provide access to the same range of data and geographies** but current levels of support will be limited to general enquiries through the following email address until further arrangements are made and put in place: [know.fife@fife.gov.uk](mailto:know.fife@fife.gov.uk)

If you have any pressing queries, requests for data or requests for support in accessing data on the KnowFife Dataset, please contact Chris Brown as soon as possible (contact details at the bottom of this bulletin), to ensure your request can be addressed before the above date.

The March bulletin will provide further details.

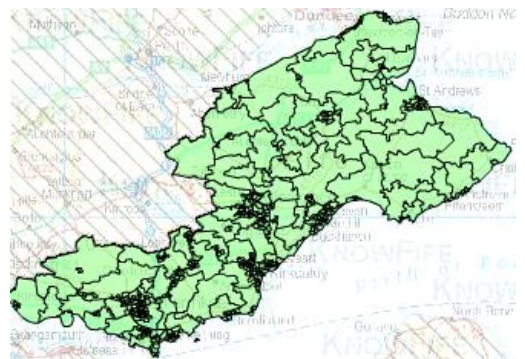
## News

### **Latest Data Updates** (click links for more detail)

- Health & Wellbeing | [Child MMR Immunisation 2013](#)
- Health & Wellbeing | [Child DTP Immunisation 2013](#)
- Economic | [December 2014 Job Seekers Allowance](#)
- Economic | January 2014 Job Seekers Allowance **forthcoming**

### **Recent Data Updates** (click links for more detail)

- Education | [2012-13 Attainment and School Leavers data](#)
- Housing | [2003-2013 Council Tax band data](#)



## **KnowFife Dataset Training!**

There is **very limited** space available on the KnowFife Dataset half-day training as part of Health Improvement Training Programme in March.

This is open, and free, to anyone who is interested or needs to access sub-Fife level data as part of their work.

See below for more details and how to apply.



## **Health and Wellbeing Infographic**

'What Do We Know About Young People's Health & Wellbeing in Fife?'

This infographic provides a snapshot of some key health indicators for Fife's young people.

To see the infographic in full, click the following link: [Health & Wellbeing of Fife's Young People](#)



## Training

The following training sessions are scheduled for KnowFife Dataset users (**subject to availability**):

➤ **NHS Fife Health Improvement Training Programme | "Introduction to the KnowFife Dataset"**

**Thursday 19<sup>th</sup> March 2015 | Venue : Stratheden Hospital, Cupar | 9.30am -12.30pm (very limited space)**

[see here for booking form & more info](#)

If you cannot book onto this course but would like some individual support, [please email the KnowFife Co-Ordinator, Chris Brown](#) to discuss options.



## General Information

### Scotland's Census 2011



2011 Census data is now available on the KnowFife Dataset. Included are 124 indicators from across the main Census themes.

A full list of these indicators and more detail on what is available can be found in this handy [KnowFife Dataset Census guide](#).

### Understanding Fife's Geographies

This new paper outlines the various sub-Fife geographical boundaries in the KnowFife Dataset and how and when they may be used.

It includes maps and descriptions of the 27 different geographies available within the system.

The paper can be viewed at the link here- [Understanding Fife's Geographies](#)



### 2011 Datazone Redraw

The Scottish Government have published the revised boundaries for datazones across Scotland.

A summary of the changes in Fife can be found in a briefing paper here: [KnowFife Quick Brief – 2011 Datazones](#)

**NOTE:** Very little data is yet available at the new datazones and so the KnowFife Dataset will continue to use the **2001** datazones for the foreseeable future.

Users will be notified of the plan to introduce them to our system and accessing data using the new boundaries.

If you have any queries or questions regarding the content of the bulletin or the KnowFife Dataset or would like to be removed from the mailing list, please contact the KnowFife Dataset Co-ordinator:

**Chris Brown**

**KnowFife Dataset Co-Ordinator**

**NHS Fife** | Cameron Hospital | e: [c.brown27@nhs.net](mailto:c.brown27@nhs.net) | t: 01592 226462 (46462)

**Fife Council** | Fife House | e: [chris.brown@fife.gov.uk](mailto:chris.brown@fife.gov.uk) | t: 03451 55 55 55 (ext. 440856)

