



Monthly Bulletin

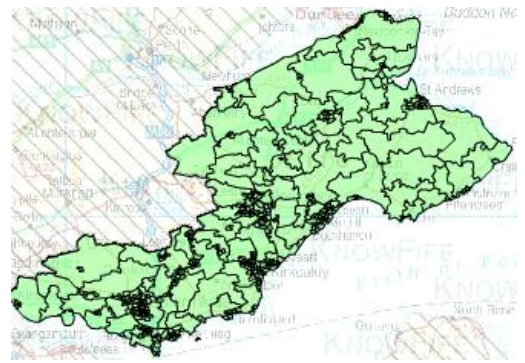
October 2014

The KnowFife Dataset email bulletin is a monthly update and roundup of information relating to the KnowFife Dataset. The KnowFife Dataset provides access to a broad range of social, economic and health and wellbeing indicators for partners and the public in Fife. <http://knowfife.fife.gov.uk>

News

Latest Data Updates (click links for more detail)

- Education | [2012-13 Attainment and School Leavers data](#)
- Health & Wellbeing | [2012 Emergency Hospital Admissions](#)
- Health & Wellbeing | [2012 Planned Hospital Admissions](#)
- Housing | [2003-2013 Council Tax band data](#) *new data
- Economic | Sept 2014 Job Seekers Allowance (JSA) (forthcoming)
- Population Data | [2002-2013 *revised* Population Estimates](#)



KnowFife Dataset User Survey

As part of the on-going efforts to improve the KnowFife Dataset, we are seeking feedback and comments from users. To achieve this we are asking users to respond to a KnowFife Dataset user survey. Whether you use KnowFife Dataset regularly or have used it only very briefly, we value your response.

The survey will only take up to 10 minutes to complete. Your response will be invaluable and will give you the opportunity to comment on and support the development of the KnowFife Dataset.

The survey, published by Fife Council, is available at the following link <http://www.fifedirect.org.uk/knowfife2014>.
Closing date – Wednesday 26th November 2014

Making the case for funding with help from KnowFife Dataset

Thanks to information from the KnowFife Dataset and the SIMD, YMCA Glenrothes have recently been successful in getting funding through Lloyds TSB for an alcohol and drug worker for one year, commencing April 2015.

Having good access to local statistics, helps make a strong case to funders for investing in Fife.

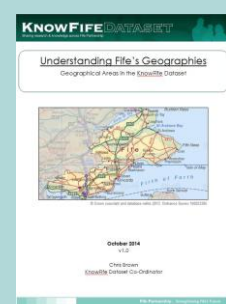
If you've used the KnowFife Dataset to help you to apply for funding for projects in Fife, and have been successful, please tell us about it! contact: chris.brown@fife.gov.uk

Understanding Fife's Geographies – new paper

This new paper outlines the various sub-Fife geographical boundaries within the KnowFife Dataset and how and when they may be used.

It includes maps and descriptions of the 27 different geographies currently available within the system.

The paper can be viewed at the link here- [Understanding Fife's Geographies](#)





Training

The following training sessions are scheduled for KnowFife Dataset users (**subject to availability**):

- **NHS Fife Health Improvement Training Programme | “Introduction to the KnowFife Dataset”**
 - Thursday 19th March 2015 | Venue : Stratheden Hospital, Cupar | [see here for booking form & more info](#)



If you are interested in training/tutorials but unable to book a place on any of the above events, [please email the KnowFife Co-Ordinator, Chris Brown](#) to discuss options to arrange the following:

- half-day training sessions,
- live demonstrations at team of group meeting
- tutorials for small groups, teams , or individuals keen to understand the KnowFife Dataset.

General Information

Data Picker

Users may have noticed that the ‘Pick and Mix’ section of the KnowFife Dataset has recently changed name. It is now known as the ‘**Data Picker**’. This change was in response to consultation with users. The **Data Picker** allows users to pick their own custom selection of all the data in the system.

[For more information, a quick guide can be found here.](#)



Follow KnowFife Dataset on Twitter [@KnowFifeData](#)

This bulletin is produced by the KnowFife Dataset Co-ordinator. Previous bulletins can be accessed [here](#).

If you have any queries or questions regarding the content of the bulletin or the KnowFife Dataset or would like to be removed from the mailing list, please contact the KnowFife Dataset Co-ordinator:

Chris Brown

KnowFife Dataset Co-Ordinator

NHS Fife | Cameron Hospital | e: c.brown27@nhs.net | t: 01592 226462 (46462)

Fife Council | Fife House | e: chris.brown@fife.gov.uk | t: 03451 55 55 55 (ext. 440856)

