



# Monthly Email Bulletin

April/May 2014

The KnowFife Dataset email bulletin is a monthly update and roundup of information relating to the KnowFife Dataset. The KnowFife Dataset provides access to a broad range of social, economic and health and wellbeing indicators for partners and the public in Fife. <http://knowfife.fife.gov.uk>

## News

### KnowFife Dataset Upgrade Complete!



As part of a larger technical exercise, the KnowFife Dataset recently received a small upgrade. This has improved some aspects of the site and its usability. In particular the site should now run quicker for users. Due to this, there were no updates to KnowFife during much of March and April. However, we can now continue to update as usual as you will see below.

As users of the KnowFife Dataset, **you should not see or experience any changes to the way you access the site.**

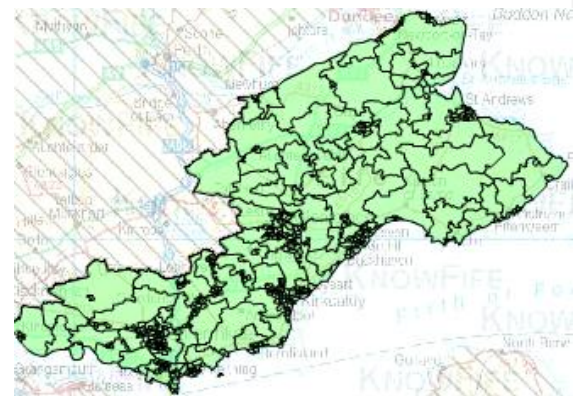
There should be no disruption but please [contact the KnowFife Dataset Co-Ordinator, Chris Brown](#), if you experience **any difficulties or notice any problems** with the KnowFife Dataset site over the coming weeks.

### Latest Data Updates

- Economic Data | [February 2014 Job Seekers Allowance data](#)
- Economic Data | [March 2014 Job Seekers Allowance data](#)
- Poverty Data | [2011 Fife Fuel poverty Data](#)

### Recent Key Data

- Economic Data | [August \(Q.3\) 2013 Welfare Benefits data](#)
- Housing Data | [Housing Dwellings data, 2012](#)
- Health and Wellbeing Data | [2012 births and deaths.](#)
- Health and Wellbeing profile | Improved '[General Health](#)' profile.
- Health and Wellbeing data | [2008-11 Scottish Health Survey Data.](#)
- Housing Data | [2013 Tenure Data](#)
- Population Data | [2012, mid-year population estimates.](#)



### ➤ KnowFife is now on Twitter!

The KnowFife Dataset has entered the world of Social Media and can now be followed on Twitter. Using the name [@KnowFifeData](#) you will be able to keep up to date with KnowFife updates as well as new and information from wider data sources.

Key Hashtags: #KnowFifeDataset, #KnowFife, #KFD, #Fife

<https://twitter.com/KnowFifeData>





## General Information

- **'Pick and Mix' name review** | The 'Pick and Mix' section of KnowFife is having its name reviewed. This area of the KnowFife Dataset allows users to access and customise a selection of data, the name is being changed to better reflect this. Users are being consulted on the renaming. [Please visit this news article](#) for more details and a chance to respond to the short-listed names.

- **Scotland's Census 2011**  **Scotland's Census 2011**  
Shaping our future
  - To access this data from *source*, please visit [Scotland's 2011 Census pages data explorer](#).
  - How 'Fife Has Changed' over the past 10 years, [can be viewed here](#).

**Note:** Due to the volume and nature of the Census data, it will take time before the *KnowFife Dataset* can be fully populated with Census 2011 data. This will begin to appear soon.

- **Scotland's Data Zone Consultation** | A joint Fife Council and NHS Fife response to the Datazone redraw consultation has been submitted. It is expected that the new datazones will be announced by the Scottish government around August 2014. For more info as to what the changes may mean for Fife, please [contact Coryn Barclay](#) who led the Fife response.

## Training

The following training sessions are scheduled for KnowFife Dataset users (**subject to availability**):

*For the Diary*

NHS Fife Health Improvement Training Programme | *"Introduction to the KnowFife Dataset"*

- **Tuesday 7<sup>th</sup> October 2014** | Venue : Victoria Hospital, Kirkcaldy | **Booking options, tbc.**
- **Monday 19<sup>th</sup> March 2015** | Venue : Stratheden Hospital, Cupar | **Booking options, tbc.**

If you are interested in training/tutorials but unable to book a place on any of the above events, [please email the KnowFife Co-Ordinator, Chris Brown](#) to discuss options to arrange the following:

- half-day training sessions,
- live demonstrations at team of group meeting
- tutorials for small groups, teams, or individuals keen to understand the KnowFife Dataset.

---

This bulletin is produced by the KnowFife Dataset Co-ordinator. Previous bulletins can be accessed [here](#).  
If you wish to be removed from the KnowFife Dataset distribution list, please email [know.fife@fife.gov.uk](mailto:know.fife@fife.gov.uk).

If you have any queries or questions regarding the content of the bulletin or the KnowFife Dataset, please contact the KnowFife Dataset Co-ordinator:

**Chris Brown**

**KnowFife Dataset Co-Ordinator**

**NHS Fife** | Cameron Hospital | e: [c.brown27@nhs.net](mailto:c.brown27@nhs.net), | t: 01592 226462 (46462)

**Fife Council** | Fife House | e: [chris.brown@fife.gov.uk](mailto:chris.brown@fife.gov.uk), | t: 03451 55 55 55 (ext. 440856)

