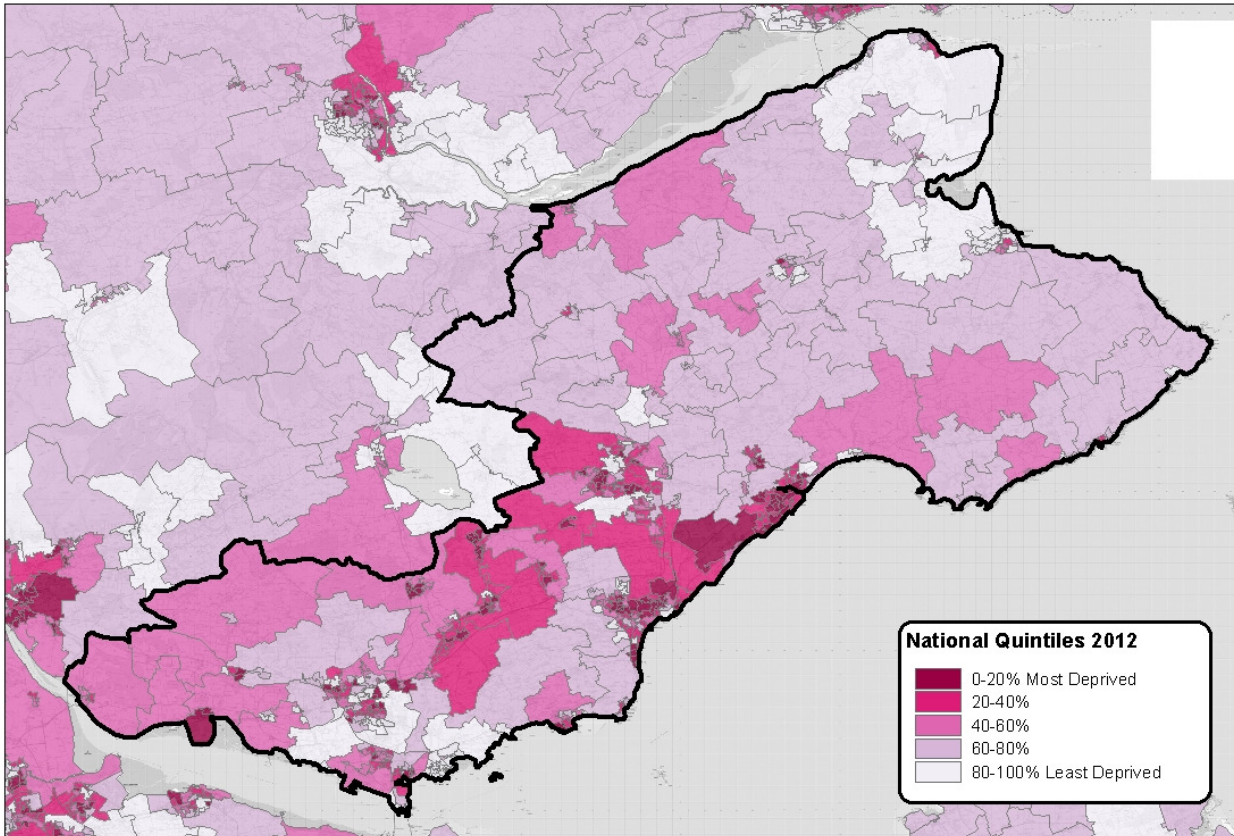


This provides a summary of key findings from the Scottish Index of Multiple Deprivation (SIMD 2012) published on 18 December 2012.

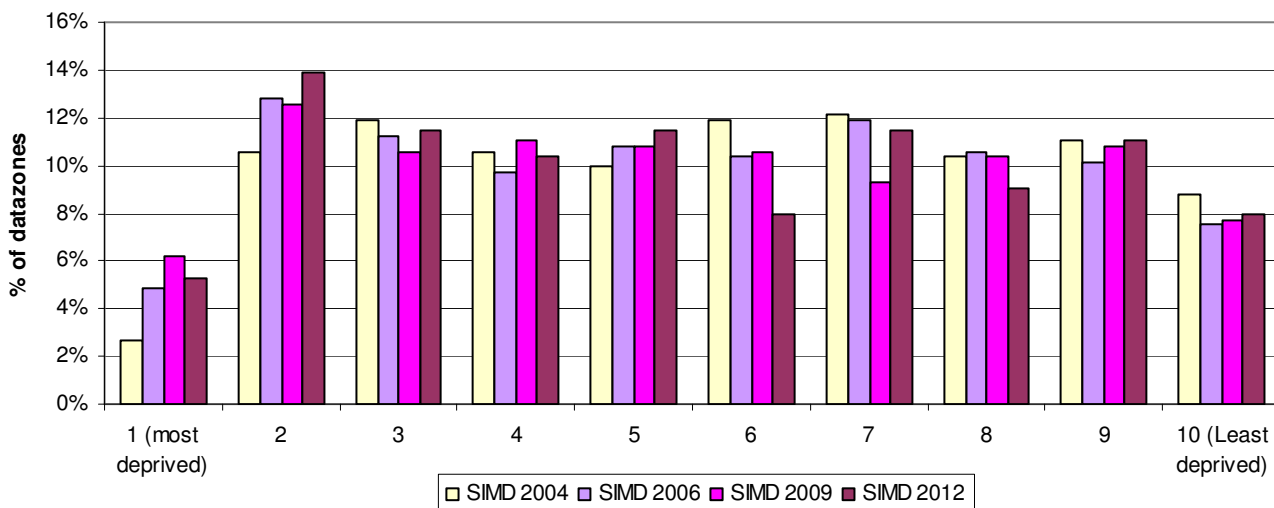
Map: Levels of deprivation in Fife in SIMD 2012 by quintiles



Reproduced by permission of Ordnance Survey on behalf of HMSO. © Crown copyright and database right (2012). All rights reserved. Ordnance Survey Licence number 100024655.

The decile graph shows what percentage of Fife's datazones are found in each of the SIMD deciles. Fife's datazones are distributed relatively evenly across the less deprived, middle, and more deprived deciles in SIMD 2012. This is similar to the pattern observed for SIMD 2009.

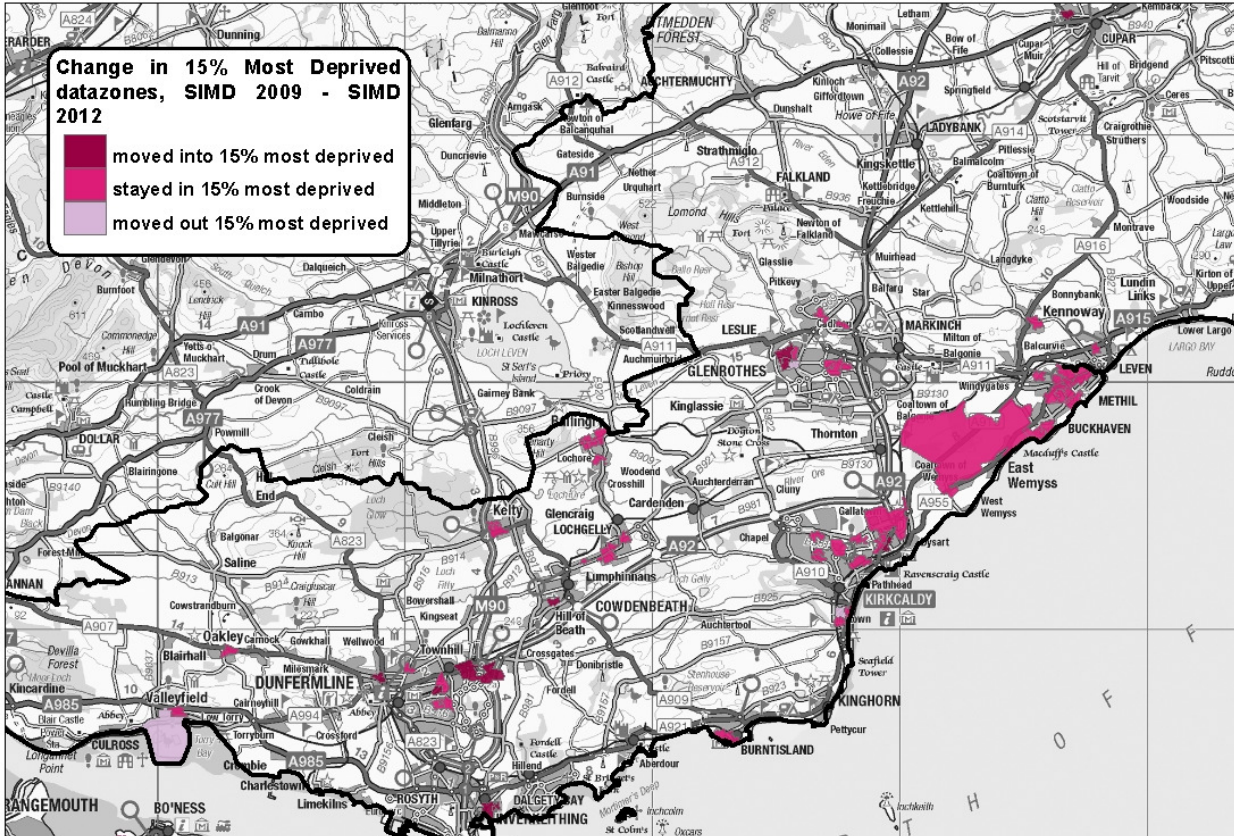
Decile graph: distribution of Fife's datazones



Most deprived datazone in Fife

The most deprived datazone in Fife in the overall SIMD 2012 is S01002779 Gallatown West, which is found in the Intermediate Zone of Kirkcaldy Gallatown and Sinclairtown and the Scottish Parliament Constituency of Kirkcaldy. It has a rank of 82, meaning that it is amongst the 5% most deprived areas in Scotland.

Change map: datazones in Fife which have stayed in or moved out of the 15% most deprived in Scotland



Reproduced by permission of Ordnance Survey on behalf of HMSO. © Crown copyright and database right (2012). All rights reserved. Ordnance Survey Licence number 100024655.

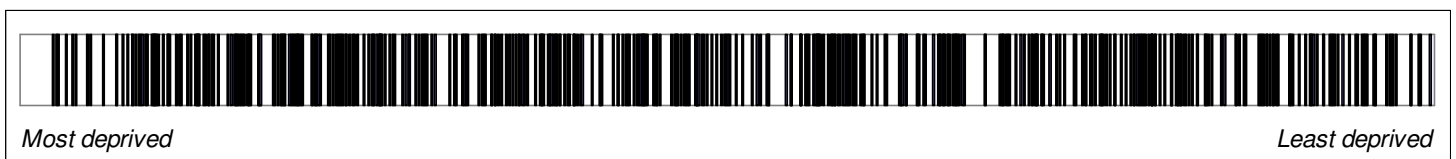
The map shows the areas within Fife which have moved into or remained in the 15% most deprived areas between SIMD 2009 and SIMD 2012.

National Share of most deprived areas

In SIMD 2012, 58 (5.9%) of the 976 datazones in the 15% most deprived datazones in Scotland were found in Fife, compared to 51 (5.2%) in 2009, 47 (4.8%) in 2006 and 34 (3.5%) in 2004. The 2012 share is displayed in the barcode chart.

The barcode chart shows the position of the local authority's datazones in the Scotland-wide ranking. Each bar on the barcode represents a datazone in the local authority and is positioned according to its deprivation rank: the more deprived a datazone is, the further to the left it will be positioned.

Barcode chart: distribution of Fife's Datazones in SIMD 2012



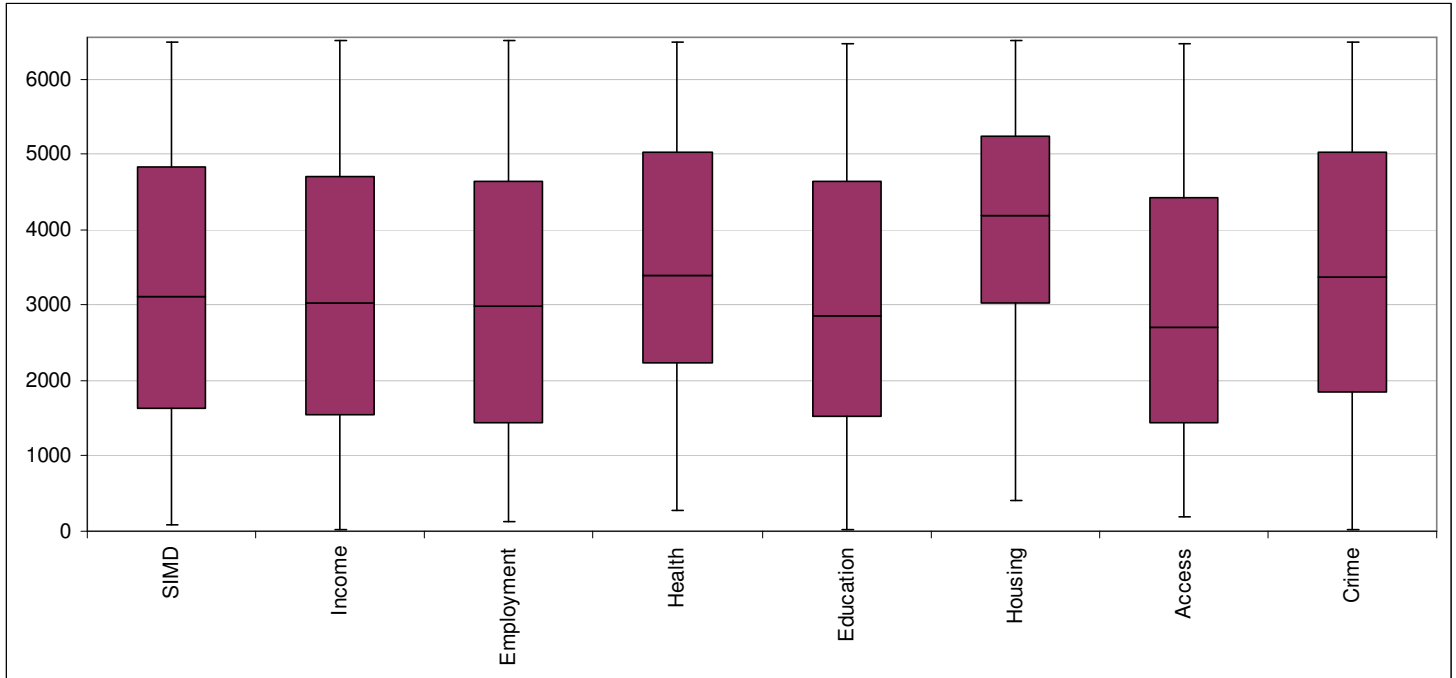
Local Share of most deprived areas

- In SIMD 2012, 58 (12.8%) of Fife's 453 datazones were found in the 15% most deprived datazones in Scotland, compared to 51 (11.3%) in 2009, 47 (10.4%) in 2006 and 34 (7.5%) in 2004.

Individual domains

The box plot summarises the range of values for the overall SIMD and the seven domains which make up the SIMD. In the following sections the individual domains are examined in more detail.

Box plot: Fife's ranks in the overall SIMD 2012 and individual SIMD domains. Boxes show the middle 50% of values and the middle (median) value; whiskers show the minimum and maximum ranks.



Income Domain

The level of income deprivation in Fife is below that in Scotland as a whole. In the SIMD 2012 income domain, 13% of the population of Fife were income deprived. This compares to 13% across Scotland as a whole.

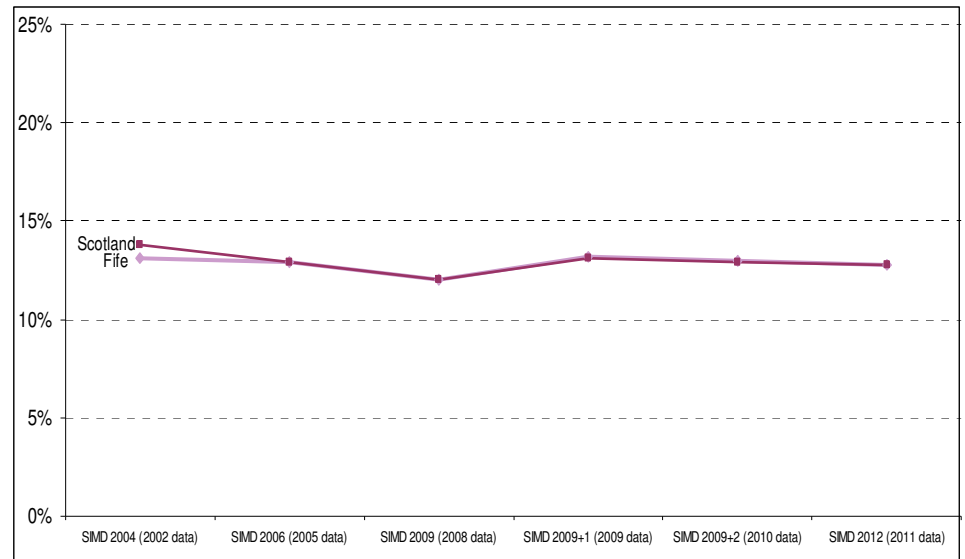
- *National share:* On the income domain in SIMD 2012, 65 (6.7%) of the 976 datazones in the 15% most deprived datazones in Scotland were found in Fife, compared to 51 (5.2%) in 2009, 49 (5%) in 2006 and 43 (4.4%) in 2004.
- *Local share:* On the income domain in SIMD 2012, 65 (14.3%) of Fife's 453 datazones were found in the 15% most deprived datazones in Scotland, compared to 51 (11.3%) in 2009, 49 (10.8%) in 2006 and 43 (9.5%) in 2004.
- The most income deprived datazone in Fife in SIMD 2012 is S01002779 Gallatown West, which is found in the Intermediate Zone of Kirkcaldy Gallatown and Sinclairtown and the Scottish Parliament Constituency of Kirkcaldy. It has a rank of 25, meaning that it is amongst the 5% most income deprived areas in Scotland.

Employment Domain

The level of employment deprivation in Fife is below that in Scotland as a whole. In the SIMD 2012 employment domain, 13% of the population of Fife aged 16-60/64 were employment deprived. This compares to 13% across Scotland as a whole (see line chart).

- *National share:* In the employment domain in SIMD 2012, 65 (6.7%) of the 976 datazones in the 15% most deprived datazones in Scotland were found in Fife, compared to 67 (6.9%) in 2009, 67 (6.9%) in 2006 and 49 (5%) in 2004.

Line chart: % of working age population employment deprived, SIMD 2004 to SIMD 2012



- *Local share:* In the employment domain in SIMD 2012, 65 (14.3%) of Fife's 453 datazones were found in the 15% most deprived datazones in Scotland, compared to 67 (14.8%) in 2009, 67 (14.8%) in 2006 and 49 (10.8%) in 2004.
- The most employment deprived datazone in Fife in SIMD 2012 is S01002655 Abbeyview North, which is found in the Intermediate Zone of Dunfermline Abbeyview North and the Scottish Parliament Constituency of Kirkcaldy. It has a rank of 128, meaning that it is amongst the 5% most employment deprived areas in Scotland.

Health Domain

- *National share:* In the health domain in SIMD 2012, 15 (1.5%) of the 976 datazones in the 15% most deprived datazones in Scotland were found in Fife, compared to 17 (1.7%) in 2009, 14 (1.4%) in 2006 and 15 (1.5%) in 2004.
- *Local share:* In the health domain in SIMD 2012, 15 (3.3%) of Fife's 453 datazones were found in the 15% most deprived datazones in Scotland, compared to 17 (3.8%) in 2009, 14 (3.1%) in 2006 and 15 (3.3%) in 2004.
- The most health deprived datazone in Fife in SIMD 2012 is S01002856 Aberhill, which is found in the Intermediate Zone of Methil East and the Scottish Parliament Constituency of Kirkcaldy. It has a rank of 285, meaning that it is amongst the 5% most health deprived areas in Scotland.

Education Domain

- *National share:* In the education domain in SIMD 2012, 68 (7%) of the 976 datazones in the 15% most deprived datazones in Scotland were found in Fife, compared to 65 (6.7%) in 2009, 49 (5%) in 2006 and 48 (4.9%) in 2004.
- *Local share:* In the education domain in SIMD 2012, 68 (15%) of Fife's 453 datazones were found in the 15% most deprived datazones in Scotland, compared to 65 (14.3%) in 2009, 49 (10.8%) in 2006 and 48 (10.6%) in 2004.
- The most education deprived datazone in Fife in SIMD 2012 is S01002775 Smeaton North, which is found in the Intermediate Zone of Kirkcaldy Hayfield and Smeaton and the Scottish Parliament Constituency of Kirkcaldy. It has a rank of 27, meaning that it is amongst the 5% most education deprived areas in Scotland.

Housing Domain

- *National share:* On the housing domain in SIMD 2012, 5 (0.5%) of the 976 datazones in the 15% most deprived datazones in Scotland were found in Fife.

- *Local share:* On the housing domain in SIMD 2012, 5 (1.1%) of Fife's 453 datazones were found in the 15% most deprived datazones in Scotland.
- The most housing deprived datazone in Fife in SIMD 2012 is S01002995 St Andrews Town Centre, which is found in the Intermediate Zone of St Andrews Central and the Scottish Parliament Constituency of Kirkcaldy. It has a rank of 416, meaning that it is amongst the 10% most housing deprived areas in Scotland.

Access Domain

- *National share:* In the access domain in SIMD 2012, 60 (6.1%) of the 976 datazones in the 15% most deprived datazones in Scotland were found in Fife, compared to 54 (5.5%) in 2009, 67 (6.9%) in 2006 and 43 (4.4%) in 2004.
- *Local share:* In the access domain in SIMD 2012, 60 (13.2%) of Fife's 453 datazones were found in the 15% most deprived datazones in Scotland, compared to 54 (11.9%) in 2009, 67 (14.8%) in 2006 and 43 (9.5%) in 2004.
- The most access deprived datazone in Fife in SIMD 2012 is S01003003 Flisk Lindores and Luthrie, which is found in the Intermediate Zone of Newburgh and the Scottish Parliament Constituency of Kirkcaldy. It has a rank of 197, meaning that it is amongst the 5% most access deprived areas in Scotland.

Crime Domain

- *National share:* In the crime domain in SIMD 2012, 54 (5.5%) of the 976 datazones in the 15% most deprived datazones in Scotland were found in Fife, compared to 69 (7.1%) in 2009 and 93 (9.5%) in 2006.
- *Local share:* In the crime domain in SIMD 2012, 54 (11.9%) of Fife's 453 datazones were found in the 15% most deprived datazones in Scotland, compared to 69 (15.2%) in 2009 and 93 (20.5%) in 2006.
- The most crime deprived datazone in Fife in SIMD 2012 is S01002722 Kirkcaldy Central, which is found in the Intermediate Zone of Kirkcaldy Central and the Scottish Parliament Constituency of Kirkcaldy. It has a rank of 30, meaning that it is amongst the 5% most crime deprived areas in Scotland.